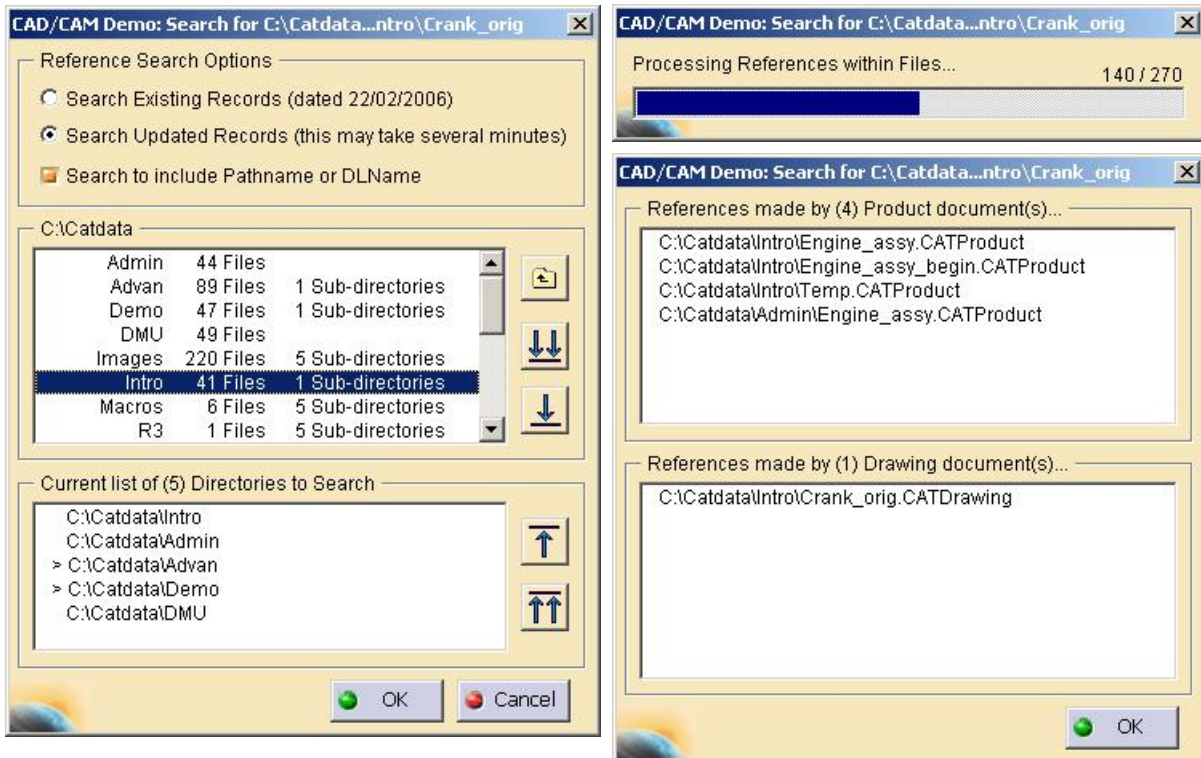


# The CAD/CAM Partnership

The leading independent CATIA specialist in the UK

## ccFileReferences.catvba



*"If I were to modify and save the current Part or Product assembly, which other documents would be affected?..."*

- ★ This macro lists Product and Drawing documents which reference the current Part or Product document, presents windows of the **standard CATIA V5 style**, and incorporates a **dual execution capability** (i.e. either directly or via a .catvbs macro).
- ★ A "Search to include **Pathname or DLName**" (of the current document) can be used to differentiate between standard parts (with identical names) from within different project directories, and this setting is always clarified by the common window title.
- ★ The main search panel illustrates how **directories** (with useful file and sub-directory counts) **can be 'browsed'** and selected (since only a browse function for files is provided as standard), and also optionally flagged (by ">") to indicate that **sub-directories** are to be **implicitly included** in the selection. The current/parent directory is identified by being initially highlighted.
- ★ Should the list of Directories to Search be modified, then the "Search Updated Records" option is automatically activated, requiring a review of the documents existing in the specified list of Directories to Search. The progress of such a search is clearly indicated by a **progress bar**, (which also is currently unavailable as a CATIA window function, and has been generated as part of this macro).
- ★ In the case where the "Search Existing Records" date is acceptable, then the results (listing Product and/or Drawing documents) are displayed **virtually instantaneously**.