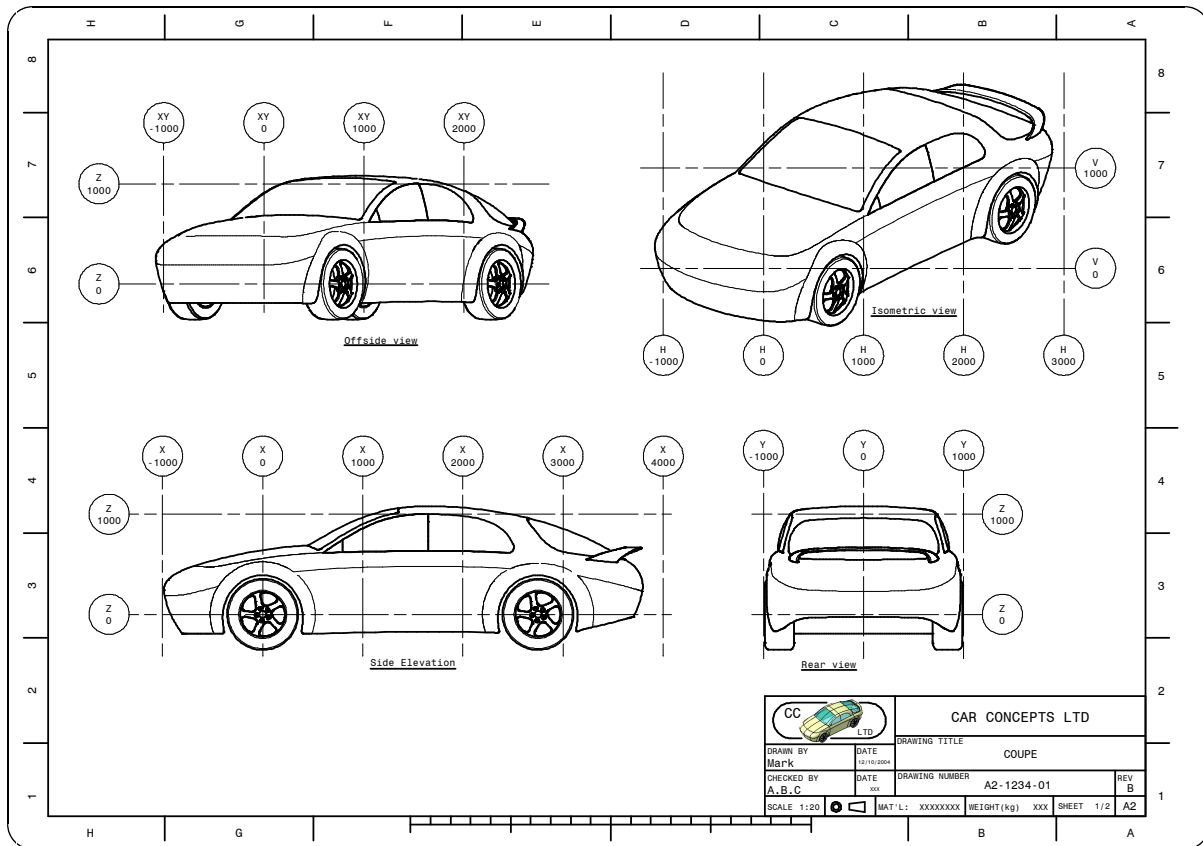


The CAD/CAM Partnership

The leading independent CATIA specialist in the UK

ccGrid.catvbs



- ★ Generates 'Car-line' regular user-specified Grids in the current/active drawing View
- ★ Accepts either a preselected Point, or specified offsets, to optionally override the View origin as the **Grid datum**
- ★ Proposes a calculated or existing Spacing, together with any datum offset values
- ★ The Grid is defined by **2 diagonally opposite indicated Points**, the first indicated Point defining the sides that are labeled
- ★ Any existing ccGRID in the current/active view would be highlighted, and subsequently replaced by the specification of a new Grid extent, which may include different sides being labeled
- ★ Grid axes labels are automatically determined as either a positive or negative X, Y or Z view direction for standard orthogonal Views (or as XY, YZ or XZ should a View axis lie within one of these planes) or otherwise as H and V
- ★ The program can leave the Grid selected (highlighted) to enable it to be either deleted, or, for example, constrained as 'Fixed' via Constraints Defined in Dialog Box: 