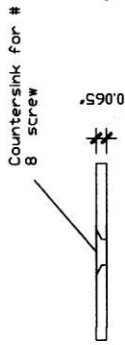
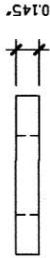


Note 1. Hold the .0275" dimension as accurately as possible. Dr. be sure to keep this dimension the same on all three spacers. Keep tolerance to within 0.002!

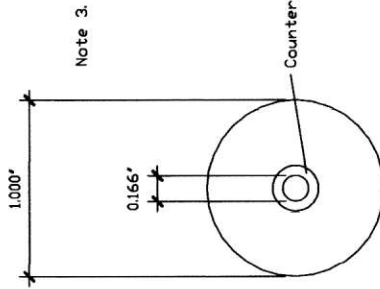


Note 2.



Note 2. Make this washer 0.016" ($1/64$) thicker than the 0.438" ($7/16$) pass-through of the spacer. This will allow the aluminum fender type washer to sit flush against the Delrin washer.

Note 3. Make or purchase aluminum fender type washers. The thickness called out is suggested and not critical. Countersinking for # 8 screws is suggested. However, mandatory at tank rib # 2 if a flop tube is to be used.



Note 3.

Aluminum washer

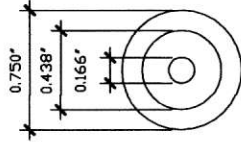
Materials

Can be purchased at MSC (listed in Van Remortel's Yeller Pages

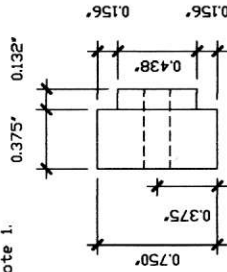
Delrin is a trade name for (generic name) acetal.

Part #s:
1 foot # 63383244 3/4" dia Natural Acetal rod \$1.95

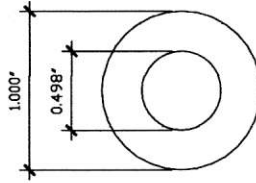
1 foot # 63383301 1" dia Natural Acetal rod \$3.60



Note 1.



Delrin Spacer



Delrin Washer

Note 1: Hold the .375" dimension as accurate as possible. Dr. make sure that all three spacers are the same thickness. Keep to .002"
 Note 2: Make this washer 0.16" ($1/64$) thicker than the .438" ($7/16$) pass-through of the spacer. This will allow the Aluminum fender washer to sit flush against the Delrin washer.
 Note 3: Make or purchase aluminum fender type washers. The thickness called out is a suggestion and is not critical. Countersinking the holes is suggested. However, if the flop tube is placed, than necessary at the # 2 tank rib. The dia of the screw hole is for a # 8 screw (.166" to .250")