

# Media eLinker

## Contents

1. What is Media eLinker?
2. Installing Media eLinker
3. Navigating Media eLinker
4. Transferring MP3 and Image Files (D1)
5. Transferring Recorded Files (D2)
6. Exploring Menu

## 1. What is Media eLinker?

With this program, transferring and editing MP3, JPEG and recorded files are available by connection between PC and recorder.

Media eLinker supports the following operating systems:

WINDOWS 98, ME, 2000, XP

You can download Media eLinker from HUMAX website - [www.humaxdigital.com](http://www.humaxdigital.com)

## 2. Installing Media eLinker

You can install Media eLinker using a CD-ROM or a downloaded file.

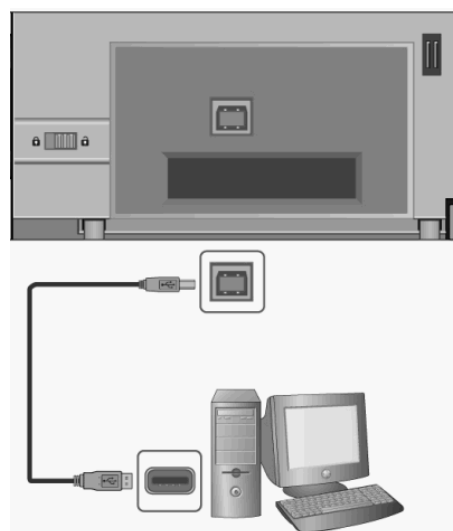
### To install Media eLinker from a CD-ROM:

1. Insert the Media eLinker CD-ROM into a CD-ROM drive.
2. Double-click 'Setup.exe' on \[CD-ROM Drive]
3. Follow the instructions on your screen.
4. Re-start PC and then connect your recorder with PC by USB cable.
5. Turn on the receiver.

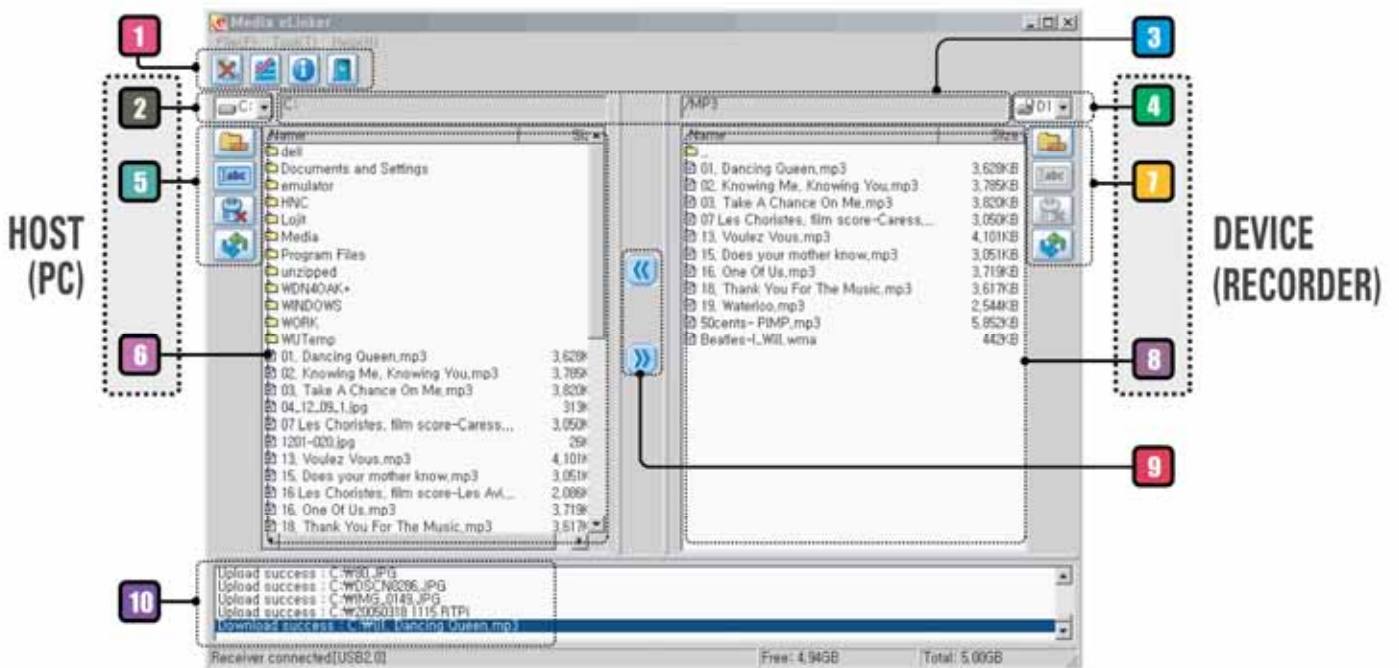
### To install Media eLinker from a downloaded file:

1. Double-click the downloaded file. (Setup.exe)
2. Follow the instructions on your screen.
3. Re-start PC and then connect your recorder with PC by USB cable.
4. Turn on the receiver.

**Note:** You should turn off the recorder before you connect to a PC.



### 3. Navigating Media eLinker



1. Toolbar
2. Drive selection
3. Host/Device Path
4. Device selection
  - D1: Image, MP3
  - D2: Recorded files
5. Command button
6. Directory on PC
7. Command button
8. Directory on your recorder
9. Transfer button
10. Status message window

### [Toolbar]



**Connect:** Connects to the recorder.



**Disconnect:** Disconnects the recorder.



**Preference:** Selects a language for Menu.



**Program Information:** Views the application information.  
Indicates total size and free size of the Hard Disk on the Device.



**Program Exit:** Closes the application.

### [Command Button]



**New Folder:** Makes a new folder. You should enter a folder name.



**Rename:** Renames the file or folder.  
If you rename the file, you should include the file extension - \*.jpg or \*.mp3



**Delete:** Deletes the selected files or folders.



**Refresh:** Refreshes the listings in the current directory.

### [Transfer Button]

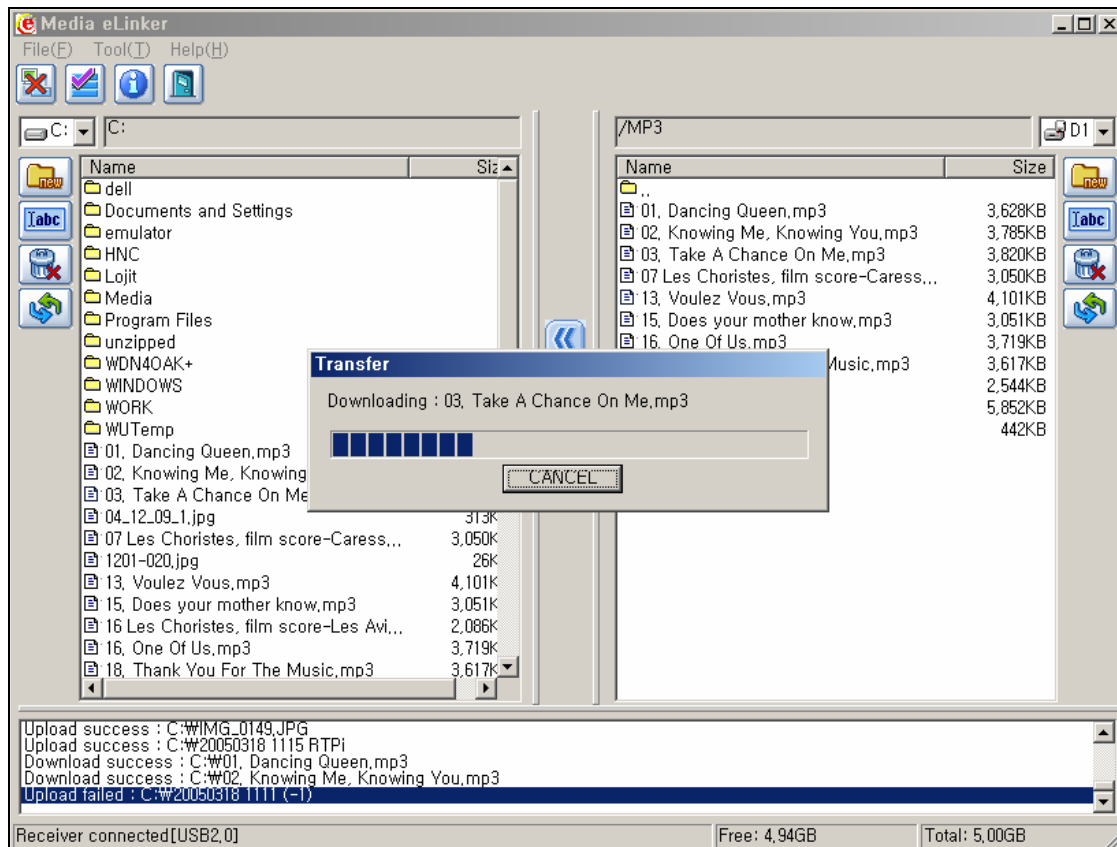


**Upload:** Transfers MP3, JPEG and recorded files from your recorder to a PC.






**Download:** Transfers MP3, JPEG files from a PC to your recorder.


## 4. Transferring MP3 and Image Files (D1)



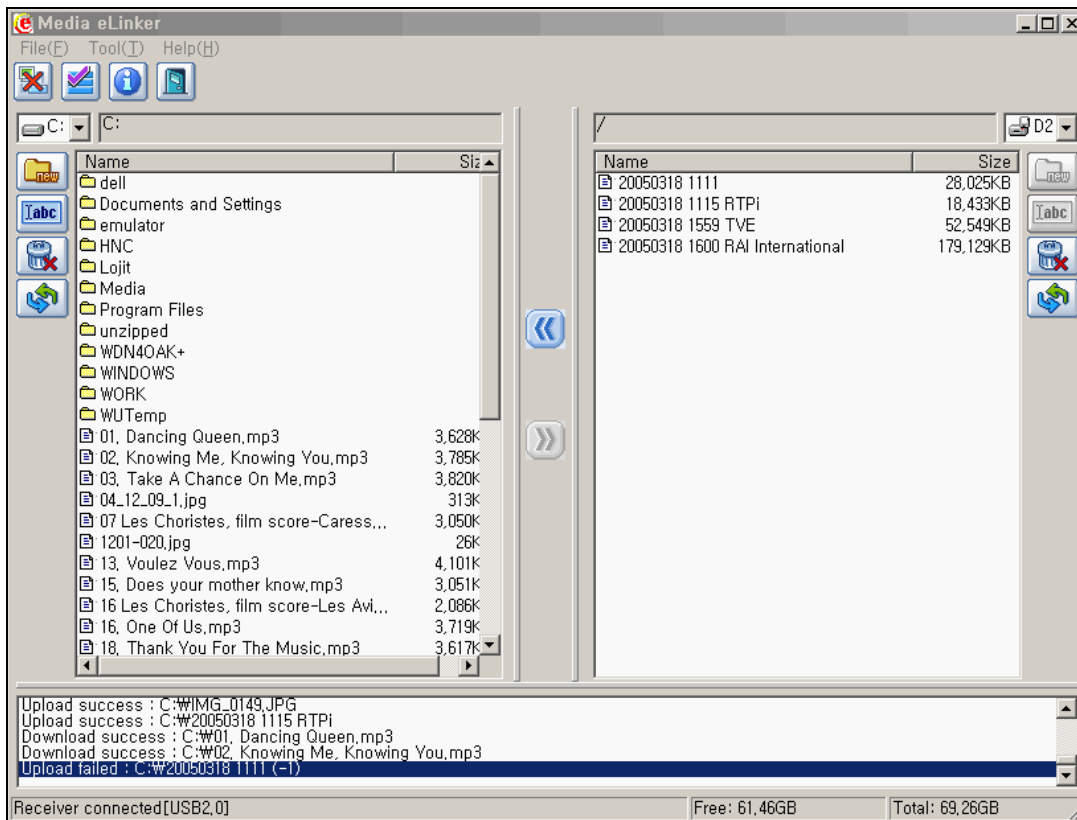
### [Using or button]

1. Make a connection to your recorder by clicking .
- After making connection, right-pane shows the MP3 and Image folders by default.
2. Select the folder that contains the file you would like to download or upload.
3. Select the file you want to transfer. You can select multiple files with Ctrl or Shift key.
4. Click  or  button to download or upload.



### [Using double-click]

1. Make a connection to your recorder by clicking .
- After making connection, right-pane shows the MP3 and Image folders by default.
2. Select the folder that contains the file you would like to download or upload.
3. Double-click the file you want to transfer.


## 5. Transferring Recorded Files (D2)

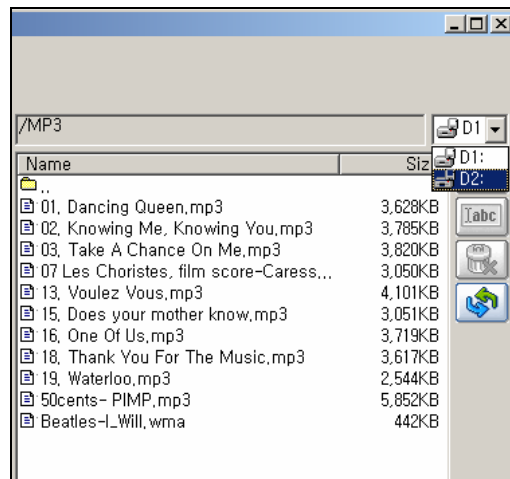


### [Using or button]

1. Make a connection to your recorder by clicking .  
After making connection, select **D2** to display recorded files.
2. Select the file you want to upload.
3. Click  button to upload.

### [Using double-click]

1. Make a connection to your recorder by clicking .  
After making connection, select **D2** to display recorded files.
2. Double-click the file you want to upload.



### Note:

1. The recorded file name should be named using the basic characters of the recorder. For detailed information about how to change the name of a recorded programme, refer to Chapter 6.4. Editing Recorded Programmes of user manual.
2. Only uploading is available.
3. When you select the D2 (Recorded files), the New folder and Rename buttons are disabled.

# 6. Exploring Menu

## File

**Connect:** Connect to the Device.

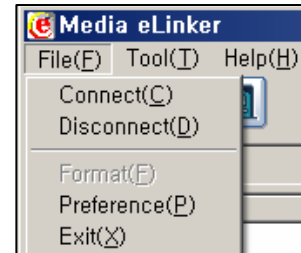
**Disconnect:** Disconnect the Device.

**Format:** Format the device. All data in the device will be deleted.

**Preference:** Select the language for Menu.

You can also select whether or not showing status messages.

**Exit:** Close application.



## Tool

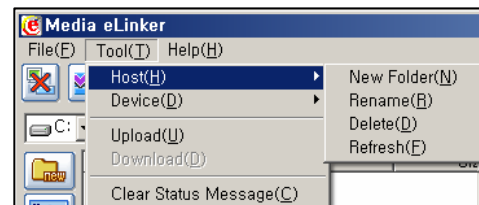
### [Host]

**New Folder:** Make a new folder on the Host.

**Rename:** Rename a file or folder on the Host.

**Delete:** Delete a file or folder on the Host.

**Refresh:** Refresh listings in the current directory on the Host.



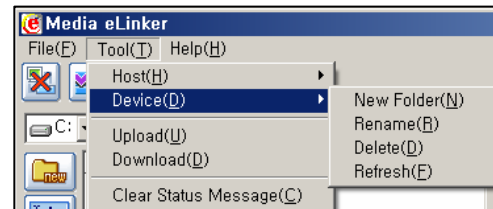
### [Device]

**New Folder:** Make a new folder on the Device.

**Rename:** Rename a file or folder on the Device.

**Delete:** Delete a file or folder on the Device.

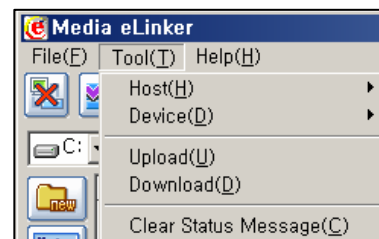
**Refresh:** Refresh listings in the current directory on the Device.



**[Upload]** Transfer files to the Host from the Device.

**[Download]** Transfer files to the Device from the Host.

**[Clear Status Message]** Clear all the status messages.



## Help

**[About]** Indicate program version and total/free size of the Hard Disk on the Device.

